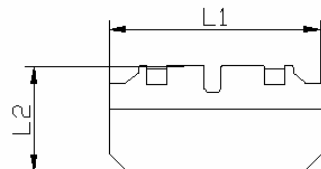
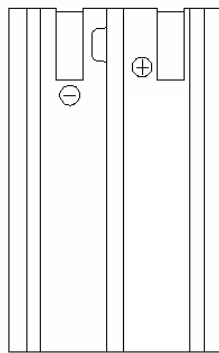
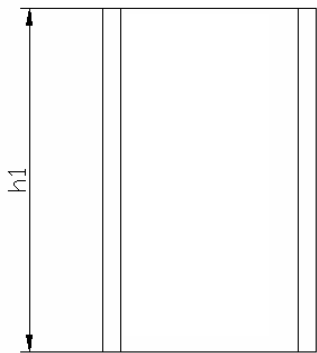



## data sheet

<b>system:</b>	Lithium-Ion-Battery
<b>nominal voltage:</b>	7,4V
<b>end charge voltage:</b>	8,4V
<b>max. charge current:</b>	700mA
<b>charge conditions</b>	
standard charge:	350mA for 3,5h min.
fast charge:	700mA for 2,5h min.
charging method:	CC-CV (constant current and constant voltage)
<b>capacity</b>	
nominal:	after standard charge 730mAh at 0,2C discharge to 5,5V
minimal:	630mAh at 0,2C discharge 600mAh at 1C discharge
<b>max. discharge current:</b>	700mA
<b>life time expectancy:</b>	> 300 cycles
<b>ambient temperature range</b>	
charge:	0...45°C
discharge:	-20...60°C
long term storage:	-20...35°C (less than 1 year)
<b>weight:</b>	47g
<b>dimensions:</b>	L1: 32,3mm L2: 16,0mm h1: 52,1mm



38

	specifications for model/type:	A-Nik EN EL1
	Ansmann drawing number / part number:	5022413
		V2
	drawn by / date:	SVK/11.04.2007