

data sheet

system: Lithium-Ion-Battery

nominal voltage: 7,4V

end charge voltage: 8,4V

max. charge current: 750mA

charge conditions
 standard charge: 375mA for 3,5h min.
 fast charge: 750mA for 2,5h min.
 charging method: CC-CV (constant current and constant voltage)

capacity
 after standard charge
 nominal: 750mAh at 0,2C discharge to 5,4V
 minimal: 680mAh at 0,2C discharge
 650mAh at 1C discharge

Energy: 5,9Wh

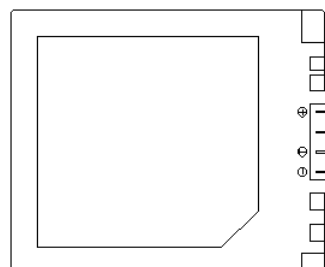
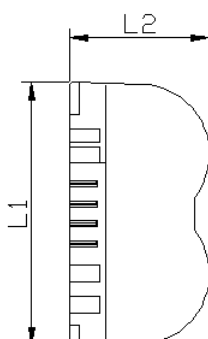
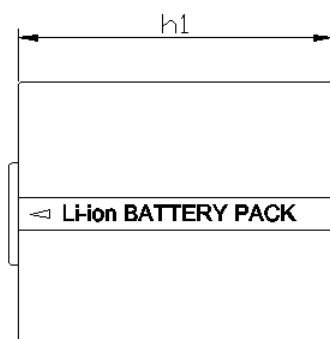
max. discharge current: 750mA


life time expectancy: > 300 cycles

ambient temperature range
 charge: 0...45°C
 discharge: -20...60°C
 long term storage: -20...35°C (less than 1 year)

weight: 45g

dimensions: L1: 36,2mm
 L2: 19,3mm
 h1: 43,0 mm



	specifications for model/type:	A-Pan CGA S006
	Ansmann drawing number / part number:	5022903
	drawn by / date:	SVK/10.04.2008